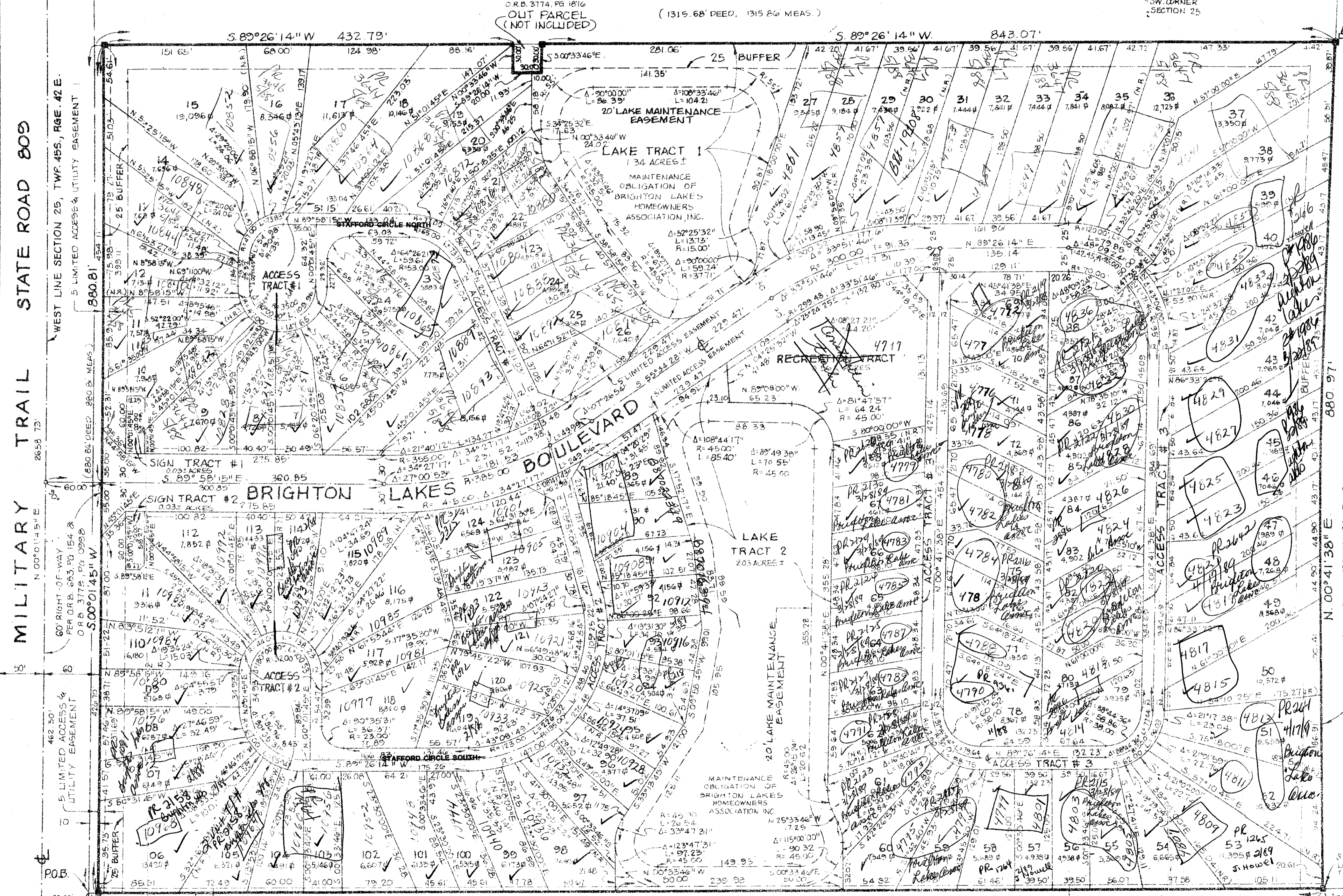


# A PLANNED UNIT DEVELOPMENT BRIGHTON LAKES

149

WEST 1/4 CORNER SECTION 25 - FOUND ROD & CAP WHICH REPLACED P.B. COUNTY DISC WHICH REPLACED OLD BRIDGE SPIKE

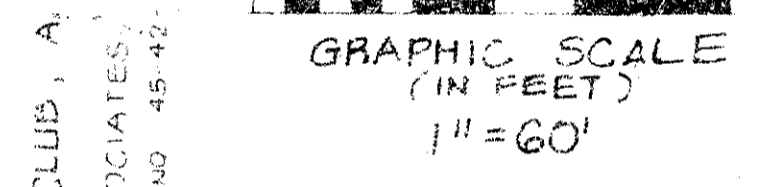
THE VILLAS OF PINE TREE (P.B. 40, Pgs. 24, 25 & 26)



57/149

Subdivision # 57  
Book 149  
Page 1908  
PUD # 35  
PUD # 33436  
TAZ 489  
25/45/42

SW CORNER SECTION 25 - FOUND 204 NAIL WHICH REPLACED P.B. COUNTY DISC WHICH REPLACED OLD BRIDGE SPIKE



SHEET INDEX	
SHEET NO	DESCRIPTION
1	TITLE INFORMATION
2	BOUNDARY & TRACTS
3	EASEMENTS

AD & B  
CREATED BY

Pet. 84-16

**LEGEND**  
 PERMANENT REFERENCE MONUMENT  
 SQUARE FEET  
 (N.R.) NOT RADIAL

NOTE: SEE SHEET 30F3 FOR EASEMENTS

57/149

RECORD PLAT OF BRIGHTON LAKES TRACT # ACCESS SHEET	
ADAIR & BRADY, INC. CONSULTING ENGINEERS & LAND SURVEYORS	AD SCALE 1" = 60' DATE JULY 1987 JOB NO. 83-193C
Dr. G.B. F.B. B.L. I. Scale 1" = 60' Ck. P.G. Date JULY 1987 Ad. Job No. 83-193C	SHEET 2 OF 3 FP 1380

0417-001